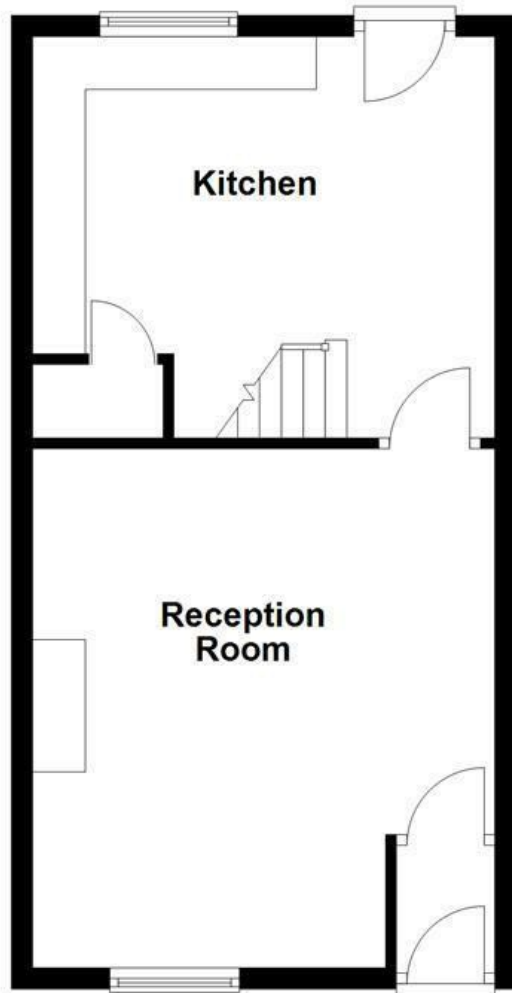
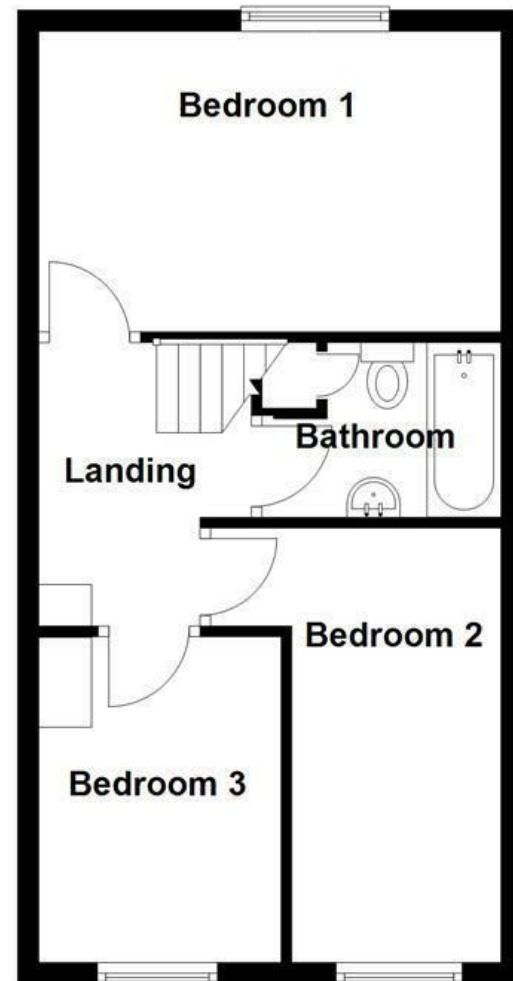


Ground Floor
Approx. 38.5 sq. metres (413.9 sq. feet)



First Floor
Approx. 38.5 sq. metres (413.9 sq. feet)



Energy Efficiency Rating		Current	Potential
<i>Very energy efficient - lower running costs</i>			
(92 plus) A			
(81-91) B			
(69-80) C			
(55-68) D			
(39-54) E			
(21-38) F			
(1-20) G			
<i>Not energy efficient - higher running costs</i>			
England & Wales	EU Directive 2002/91/EC		

These particulars, whilst believed to be accurate are set out as a general outline only for guidance and do not constitute any part of an offer or contract. Intending purchasers should not rely on them as statements of representation of fact, but must satisfy themselves by inspection or otherwise as to their accuracy. No person in this firm's employment has the authority to make or give any representation or warranty in respect of the property.

Norfolk Street, Blackburn, BB2 4EW

£99,950

CHARMING THREE BEDROOM MID TERRACE PROPERTY

Welcome to this enviable mid-terrace house located on Norfolk Street in Blackburn. This delightful property is an excellent opportunity for first-time buyers or investors seeking a promising addition to their portfolio.

The house features three well-proportioned bedrooms, providing ample space for a growing family or the potential for a home office. The modern fitted kitchen is a highlight, offering a stylish and functional area for cooking and entertaining. The spacious lounge is perfect for relaxing with family or hosting friends, creating a warm and inviting atmosphere.

The family bathroom is conveniently located, ensuring ease of access for all residents. This property is ideally situated close to local schools and amenities, making it a practical choice for families and individuals alike.

With its appealing features and prime location, this mid-terrace house on Norfolk Street presents a wonderful opportunity to create a comfortable home or a lucrative investment. Do not miss the chance to view this property and discover its full potential.

Some photos have been virtually staged to help you envision your dream home!

Norfolk Street, Blackburn, BB2 4EW

£99,950



- Mid-Terraced Property
- Spacious Reception Room
- On Street Parking
- Council Tax Band: A
- Three Bedrooms
- Three Piece Family Bathroom
- EPC: TBC
- Modern Fitted Kitchen
- Enclosed Rear Yard
- Tenure: Freehold

Ground Floor

Vestibule

3'10 x 3'7 (1.17m x 1.09m)

Reception Room

16'1 x 14'4 (4.90m x 4.37m)

Kitchen

14'3 x 12'5 (4.34m x 3.78m)

First Floor

Landing

8'10 x 6'8 (2.69m x 2.03m)

Bedroom One

14'3 x 8'8 (4.34m x 2.64m)

Bedroom Two

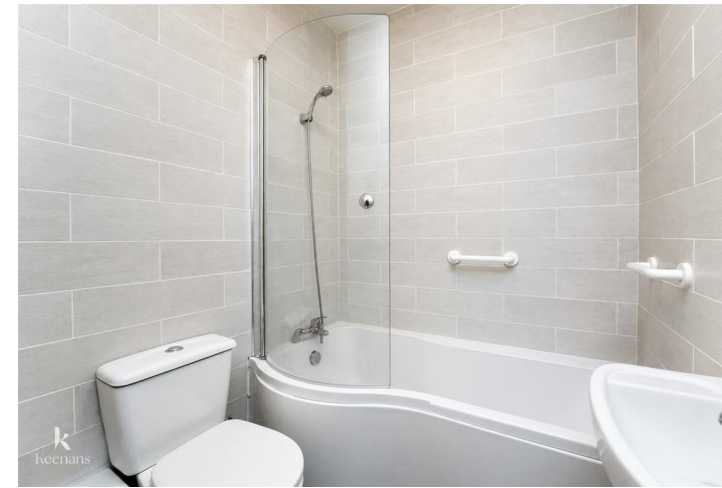
13'3 x 10'1 (4.04m x 3.07m)

Bedroom Three

10'8 x 7'6 (3.25m x 2.29m)

Bathroom

7'5 x 5'5 (2.26m x 1.65m)



Tel: 01254916276

www.keenans-estateagents.co.uk